



📱 @tecidosfiamabr

FIAMA
TECIDOS

Rua Amância Cesarino, 235 | Pq. Industrial | 13031-480 | Campinas | SP
T+55 19 3772.7270 | www.fiama.com.br



COLEÇÃO
ecotec

FIAMA
TECIDOS



ecotec

Sustentável e moderno

Ecotec é um tecido desenvolvido pensando na natureza, por isso, em sua composição, utiliza fibras de algodão de fontes 100% sustentáveis. Uma inovação assinada pela Fiamma, utilizando seus equipamentos de última geração e, claro, sua consciência ambiental.

A coleção Ecotec 2021, mantém seu estilo com cores e estampas que valorizam toda a decoração. Os geométricos modernos e multicoloridos, compõe perfeitamente com as estampas de folhagens. Os florais ganharam fundo com textura de linho, que ficam ainda mais incríveis mistos com os lisos texturizados, estampas únicas e exclusivas Fiamma.

Ecotec possui acabamento que confere maior resistência das cores e repelência à água, sendo indicado para móveis de área externa. Em outra versão, acabamento sem repelência, mas com maciez, e é indicado para móveis de área interna e para confecção de acessórios de decoração, como almofadas, cortinas e jogos americanos.

Escolha sustentabilidade, escolha tecnologia, escolha Ecotec.

Sustainable and modern

Ecotec is a fabric developed with nature in mind, so in its composition, it uses cotton fibers from 100% sustainable sources. An innovation signed by Fiamma, using its state-of-the-art equipment and, of course, its environmental awareness.

The Ecotec 2021 collection continues to enhance indoor and outdoor decor with its unique style of prints and colors. Modern, multicolored geometric design patterns blend perfectly with natural foliage prints. To create an amazing combination with the plain textured colors, the floral patterns are given a linen texture background, creating an exclusive Fiamma designs.

It has a finish that gives greater resistance of the colors and repellency to the water, being indicated for furniture of external area. In another version, its finish does not have repellency, but it gains softness, and is indicated for interior furniture and for making decorating accessories such as cushions, curtains and table mats.

Choose sustainability, choose technology, choose Ecotec.

Sostenible y moderno

Ecotec es una tela desarrollada pensando en la naturaleza, por lo que en su composición utiliza fibras de algodón de fuentes 100% sostenibles. Una innovación firmada por Fiamma, utilizando su equipo de última generación y, por supuesto, su conciencia ambiental.

La colección Ecotec 2021 continúa mejorando la decoración interior y exterior con su estilo único de estampados y colores. Los estampados geométricos modernos y multicolores combinan a la perfección con los estampados de follaje naturales. Para crear una combinación sorprendente con los colores texturizados lisos, los motivos florales reciben un fondo de lino texturizado, creando un diseño exclusivo de Fiamma.

Tiene un acabado que le da mayor resistencia de los colores y repelencia al agua, estando indicado para muebles de área externa. En otra versión, su acabado no tiene repelencia, pero gana suavidad, y está indicado para muebles de interior y para hacer accesorios de decoración como cojines, cortinas y esteras de tabla.

Elige la sostenibilidad, elige la tecnología, elija Ecotec.

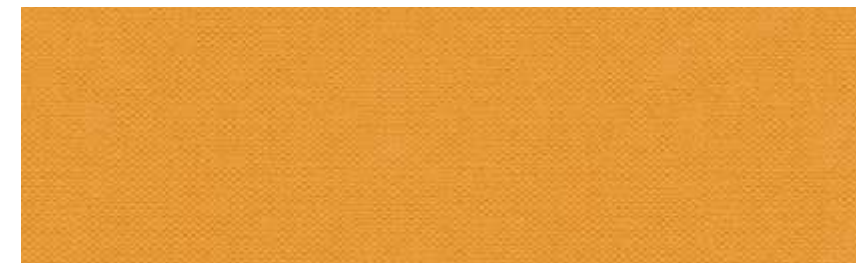




00966.00460.042789.002.96



00966.00460.052775.003.96



00966.00460.022683.041.96



00966.00460.022683.024.96



00966.00460.072794.004.96



00966.00460.032788.001.96



00966.00460.022683.037.96





00966.00460.062776.002.96



00966.00460.012792.004.96



00966.00460.022683.041.96

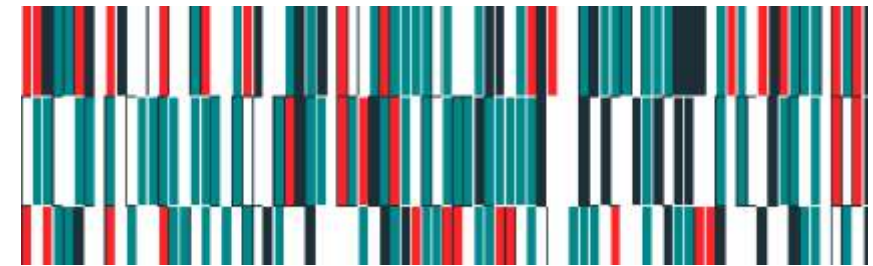


00966.00460.022683.011.96





00966.00460.082793.008.96



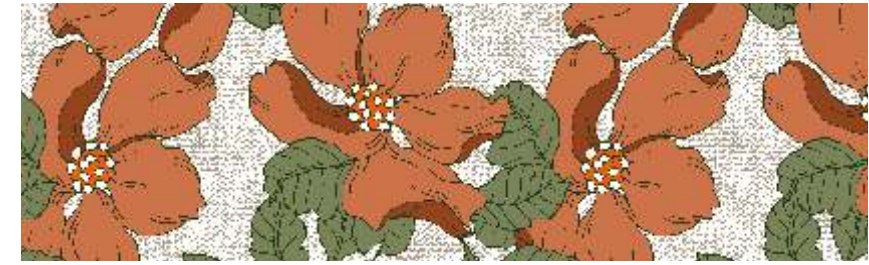
00966.00460.032788.003.96



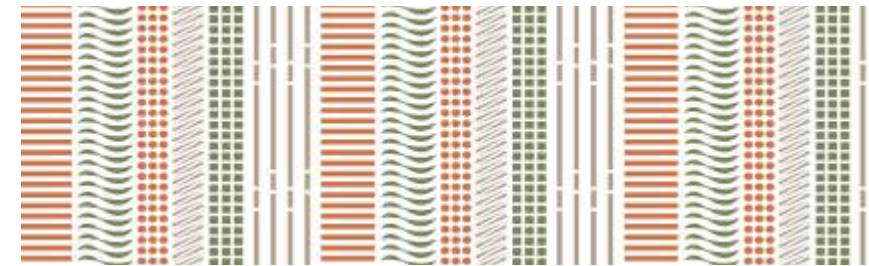
00966.00460.022683.027.96



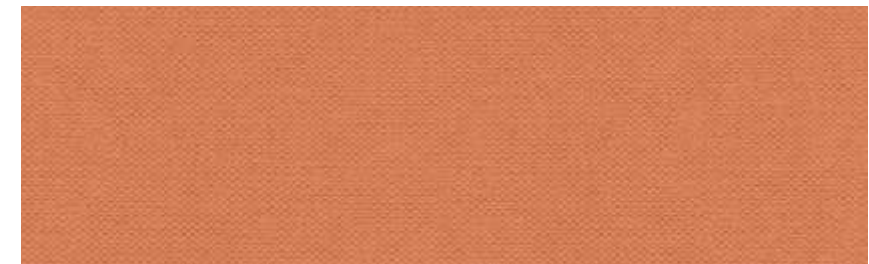
00966.00460.022683.026.96



00966.00460.062770.007.96



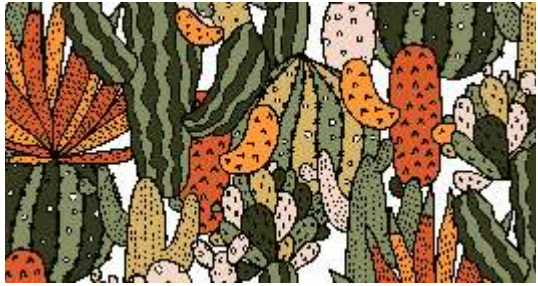
00966.00460.032778.004.96



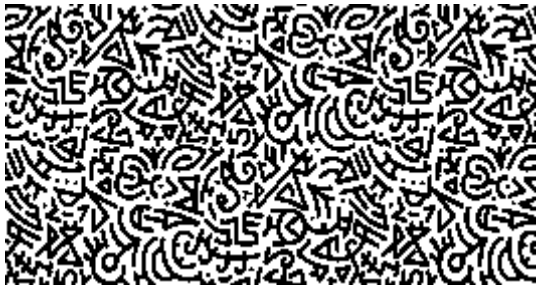
00966.00460.022683.040.96



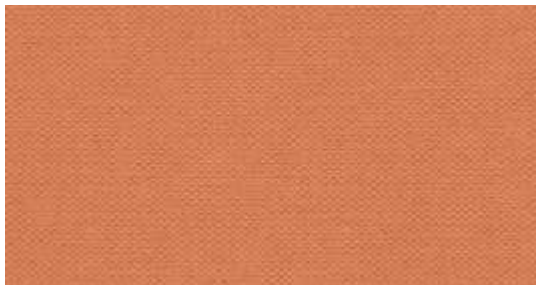
00966.00460.022683.017.96



00966.00460.082790.005.96

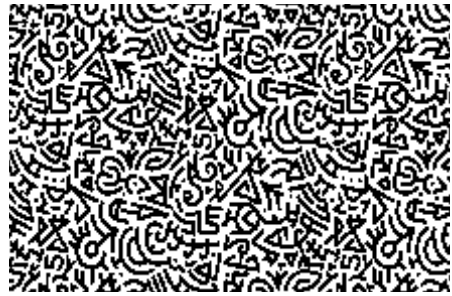


00966.00460.012792.003.96

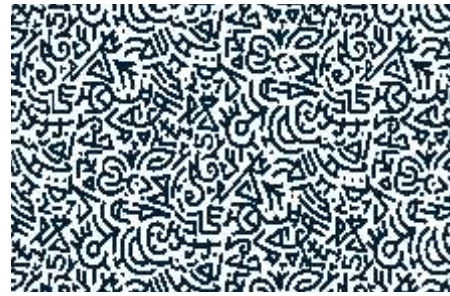


00966.00460.022683.040.96





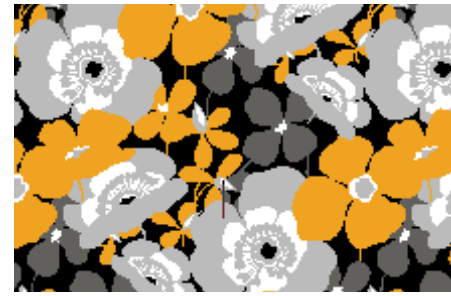
00966.00460.012792.003.96



00966.00460.012792.004.96



00966.00460.012792.005.96



00966.00460.042789.002.96



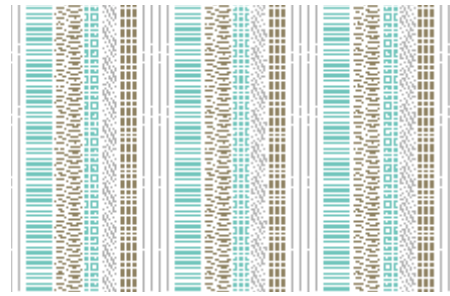
00966.00460.042789.004.96



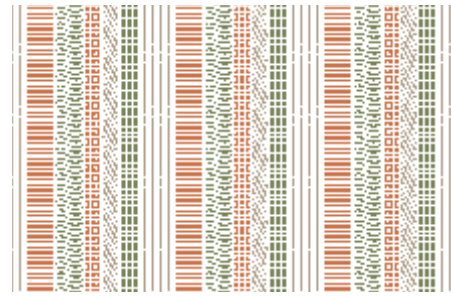
00966.00460.042789.005.96



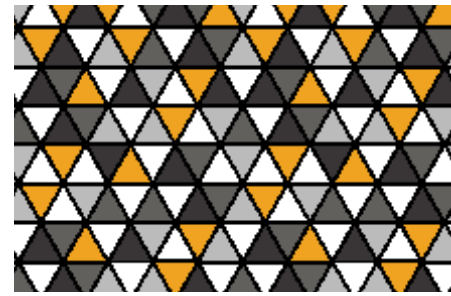
00966.00460.032778.001.96



00966.00460.032778.003.96



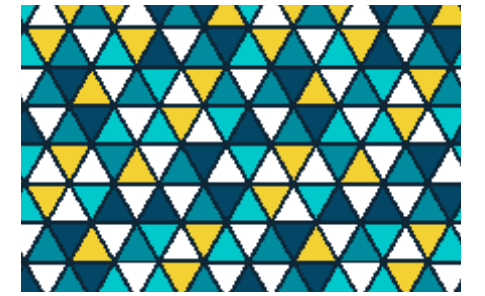
00966.00460.032778.004.96



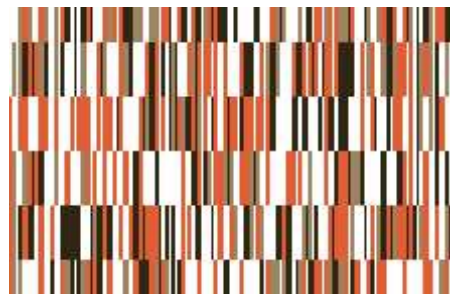
00966.00460.052775.003.96



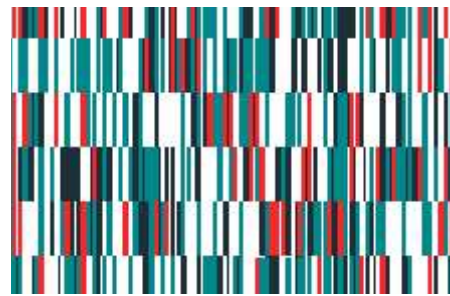
00966.00460.052775.001.96



00966.00460.052775.002.96



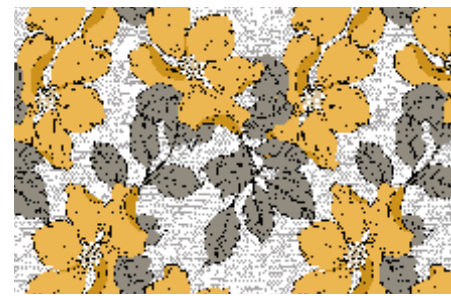
00966.00460.032788.001.96



00966.00460.032788.003.96



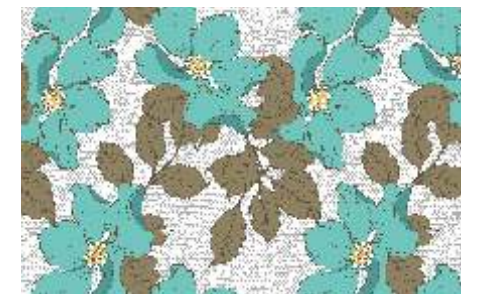
00966.00460.032788.004.96



00966.00460.062770.011.96



00966.00460.062770.007.96



00966.00460.062770.010.96



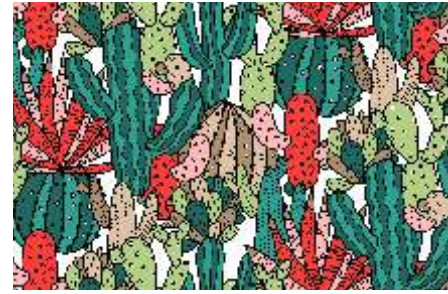
00966.00460.062776.001.96



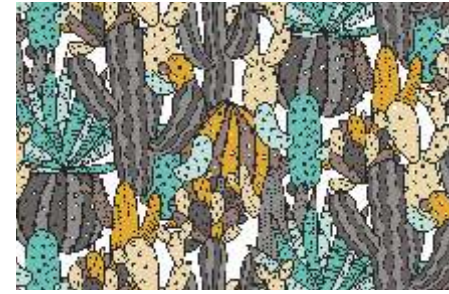
00966.00460.062776.002.96



00966.00460.062776.003.96



00966.00460.082790.001.96



00966.00460.082790.004.96



00966.00460.082790.005.96



00966.00460.062777.002.96



00966.00460.062777.003.96



00966.00460.062777.001.96



00966.00460.082793.007.96



00966.00460.082793.008.96



00966.00460.082793.005.96



00966.00460.072794.002.96



00966.00460.072794.001.96



00966.00460.072794.004.96



00966.00460.072794.005.96



00966.00460.022683.036.96



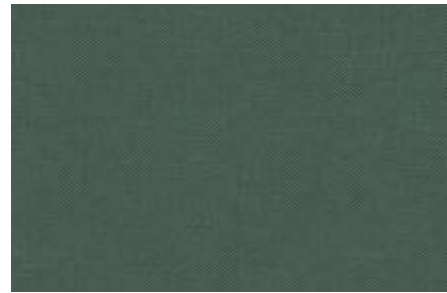
00966.00460.022683.037.96



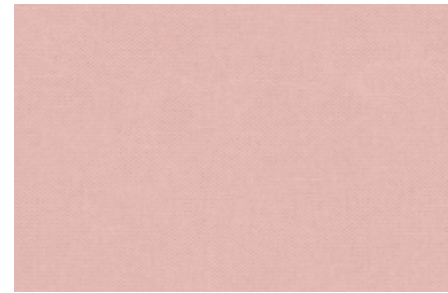
00966.00460.022683.011.96



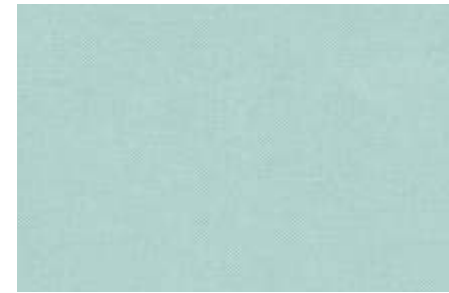
00966.00460.022683.013.96



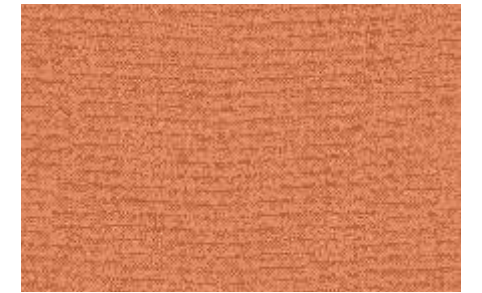
00966.00460.022683.015.96



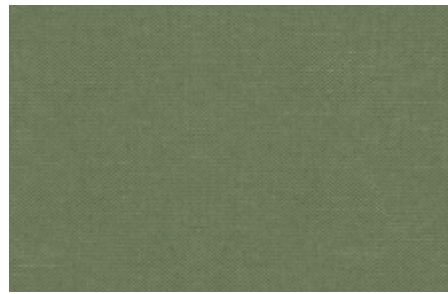
00966.00460.022683.029.96



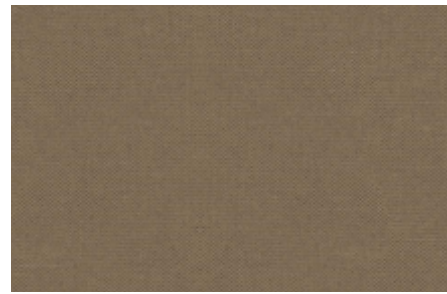
00966.00460.022683.030.96



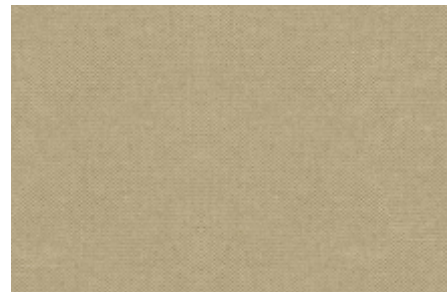
00966.00460.022683.040.96



00966.00460.022683.017.96



00966.00460.022683.020.96



00966.00460.022683.023.96



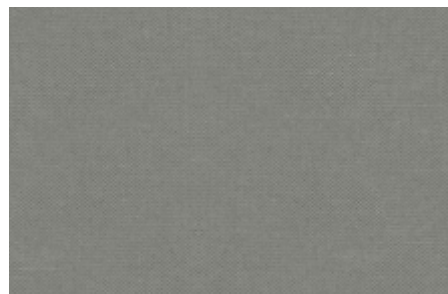
00966.00460.022683.041.96



00966.00460.022683.042.96



00966.00460.000000.000.86



00966.00460.022683.024.96



00966.00460.022683.026.96



00966.00460.022683.027.96



ecotec





RECYCLE



VEJA COMO ESCOLHER O ACABAMENTO MAIS ADEQUADO PARA O TECIDO ECOTEC.

HERE'S HOW TO CHOOSE THE MOST SUITABLE FINISH FOR ECOTEC FABRIC.

VEA CÓMO ELEGIR EL ACABADO MÁS ADECUADO PARA LA TELA ECOTEC.

NÍVEL DE PROTEÇÃO

PROTECTION LEVEL

NIVEL DE PROTECCIÓN

LIGHT
96



Confere proteção a substâncias aquosas. Pode ser utilizado em áreas internas e externas. Acabamento indicado para tecidos estampados.

Finishing provides protection against aqueous substances. Can be used in indoor and outdoor areas. This finishing is recommended for printed fabrics.

Confiere característica de toque suave e lisura a la tela. Se puede utilizar en áreas internas. Este acabado esta indicado para telas estampadas.

MACIO
01



Confere características de toque macio e lisura ao tecido. Só pode ser utilizado em áreas internas. Acabamento indicado para tecidos estampados.

Chemical treatment process that provides a better handfeel to the fabric. Can only be used in indoor areas. This finishing is recommended for printed fabrics.

Confiere característica de toque suave e lisura a la tela. Sólo se puede utilizar en áreas internas. Este acabado esta indicado para telas estampadas.

COMPOSIÇÃO DO TECIDO:
68,54% ALGODÃO E 31,46% POLIÉSTER

CONTENT: 68,54% COTTON E 31,46% POLYSTER.

COMPOSICIÓN:
68,54% ALGODÓN E 31,46% POLIÉSTER.

Para informações adicionais sobre os acabamentos, verificar as etiquetas de manutenção e uso respectivos.

For additional information on finishings, check their maintenance and use labels.

Para obtener información adicional sobre los acabados, verificar las etiquetas de mantenimiento y uso.

MATTE LIGHT
86

Confere as mesmas proteções do acabamento Light e recebe acabamento extra que inibe a transparência das cores 400 e 460.

It has the same finishing light protection and receives extra finishing that inhibits transparency of the colors 400 and 460.

Confiere las mismas protecciones que el acabado light y recibe un acabado extra que inibe la transparencia de las colores 400 y 460.

ÁREAS EXTERNAS E INTERNAS
OUTDOOR / INDOOR
ÁREAS EXTERNAS / ÁREAS INTERNAS